

*By Koru1000 we manage
not just efficiency;
but also water
resources and the
future of water.*



R&D



ENGINEERING



IMPLEMENTATION

Koru 1000

New Generation Water Management Systems

www.koru1000.com





The Easiest Way to Use the Water Productively

Koru1000 by Envest; provides to carry out the process efficiently from the water resource to the final beneficiary. Envest acts being in aware of the reality that the resources we have are not limitless as they seem to be in this era of overconsumption.

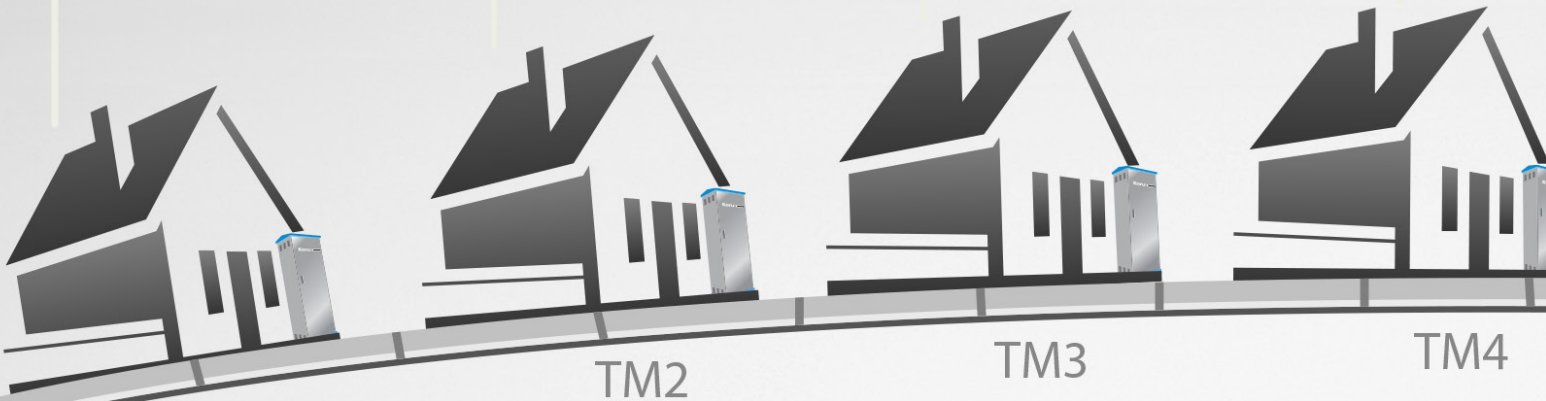
We propose modern water management solutions to protect our world on the basis of sustainability. By Koru1000, we manage water resources and the future of water as well as productivity oriented. Our power on realizing our aim bases on the motto **“there is no other world”**.

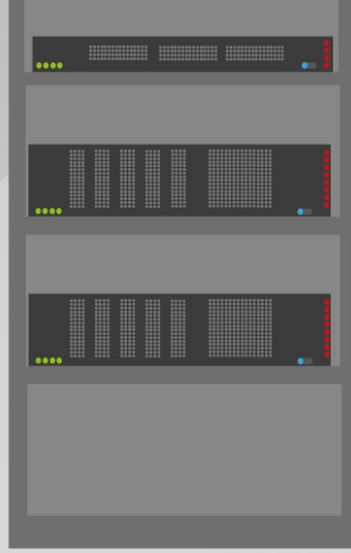


What is Korus 1000?

Korus1000 is a software & hardware ecosystem controlling water systems based on

- energy efficiency
- increasing water demand
- decreasing failures and seepage loss
- wealth management and future planning.





With its practical interface design and advanced infrastructure, Koru1000; provides services for all different kind of users.





Koru 1000

Area of Use

- Borehole Wells
- Water Supply Stations (Riser Pumps)
- Water Storage Houses
- Chlorination Plants
- Waste Water Plants
- Pressure Control Rooms

Koru1000 carries smartly on the duties of drinkable water production and distribution, evacuation of channel water from drains, agricultural irrigation, dewatering mines and water use in industrial processes.









Complex Problems simplified by **Koru1000**

We design Koru1000 to serve for different business scenarios. We get this from our field background and customers' feedback. Furthermore; Koru1000's being capable of gathering the data from the field stations built on geographically dispersed and unavailable areas, decreases the need of field staff and operating costs.





korubin.com



Alarm

Sos. Gintong

Stasiun 1 Aktif: 0.0m/h Pulsasi: 1.6bar	Stasiun 2 Aktif: 0.0m/h Pulsasi: 1.83	Stasiun 3 Aktif: 0.0m/h Pulsasi: 1.7bar	Stasiun 4 Aktif: 0.0m/h Pulsasi: 1.7bar	Stasiun 5 Aktif: 0.0m/h Pulsasi: 1.7bar
Stasiun 6 Aktif: 0.0m/h Pulsasi: 1.7bar	Stasiun 7 Aktif: 0.0m/h Pulsasi: 1.7bar	Stasiun 8 Aktif: 0.0m/h Pulsasi: 1.7bar	Stasiun 9 Aktif: 0.0m/h Pulsasi: 1.7bar	Stasiun 10 Aktif: 0.0m/h Pulsasi: 1.7bar

Favorit

Stasiun 1 Aktif: 0.0m/h Pulsasi: 1.6bar	Stasiun 2 Aktif: 0.0m/h Pulsasi: 1.83
--	--

- Stasiun 1**
Aktif: 0.0m/h
Pulsasi: 1.6bar
Status: Normal
Waktu: 2018-01-09 11:38:05
- Stasiun 2**
Aktif: 0.0m/h
Pulsasi: 1.83
Status: Alarm
Waktu: 2018-01-09 11:37:05
- Stasiun 3**
Aktif: 0.0m/h
Pulsasi: 1.7bar
Status: Normal
Waktu: 2018-01-09 11:37:25
- Stasiun 4**
Aktif: 0.0m/h
Pulsasi: 1.7bar
Status: Normal
Waktu: 2018-01-09 11:37:15
- Stasiun 5**
Aktif: 0.0m/h
Pulsasi: 1.7bar
Status: Normal
Waktu: 2018-01-09 11:36:55
- Stasiun 6**
Aktif: 0.0m/h
Pulsasi: 1.7bar
Status: Normal
Waktu: 2018-01-09 11:36:25
- Stasiun 7**
Aktif: 0.0m/h
Pulsasi: 1.7bar
Status: Normal
Waktu: 2018-01-09 11:36:05
- Stasiun 8**
Aktif: 0.0m/h
Pulsasi: 1.7bar
Status: Alarm
Waktu: 2018-01-09 11:35:55
- Stasiun 9**
Aktif: 0.0m/h
Pulsasi: 1.7bar
Status: Alarm
Waktu: 2018-01-09 11:35:45
- Stasiun 10**
Aktif: 0.0m/h
Pulsasi: 1.7bar
Status: Alarm
Waktu: 2018-01-09 11:35:35
- Stasiun 11**
Aktif: 0.0m/h
Pulsasi: 1.7bar
Status: Alarm
Waktu: 2018-01-09 11:35:25
- Stasiun 12**
Aktif: 0.0m/h
Pulsasi: 1.7bar
Status: Alarm
Waktu: 2018-01-09 11:35:15
- Stasiun 13**
Aktif: 0.0m/h
Pulsasi: 1.7bar
Status: Alarm
Waktu: 2018-01-09 11:35:05
- Stasiun 14**
Aktif: 0.0m/h
Pulsasi: 1.7bar
Status: Alarm
Waktu: 2018-01-09 11:34:55
- Stasiun 15**
Aktif: 0.0m/h
Pulsasi: 1.7bar
Status: Alarm
Waktu: 2018-01-09 11:34:45
- Stasiun 16**
Aktif: 0.0m/h
Pulsasi: 1.7bar
Status: Alarm
Waktu: 2018-01-09 11:34:35
- Stasiun 17**
Aktif: 0.0m/h
Pulsasi: 1.7bar
Status: Alarm
Waktu: 2018-01-09 11:34:25
- Stasiun 18**
Aktif: 0.0m/h
Pulsasi: 1.7bar
Status: Alarm
Waktu: 2018-01-09 11:34:15
- Stasiun 19**
Aktif: 0.0m/h
Pulsasi: 1.7bar
Status: Alarm
Waktu: 2018-01-09 11:34:05
- Stasiun 20**
Aktif: 0.0m/h
Pulsasi: 1.7bar
Status: Alarm
Waktu: 2018-01-09 11:33:55



Koru1000 Standards

The crucial issue for Koru1000 is energy efficiency in pumps and motors, field hydraulics, water well hydraulics and specific capacity, the performances of energy cables, borehole pipes and riser pipes.

Koru1000 offers simple solutions with user friendly screens for these complex processes.





Koru1000 Features

- Pump efficiency analysis
- Groundwater level control
- Cost analysis
- User-independent autonomous operation
- Water production/consumption capacity analysis
- Adaptive motor speed to water flow, water level, water pressure and consumed power
- Real-time dataflow
- Advanced data logging
- Remote control
- Easy use
- Simple interface
- Graphical visualization of historical data

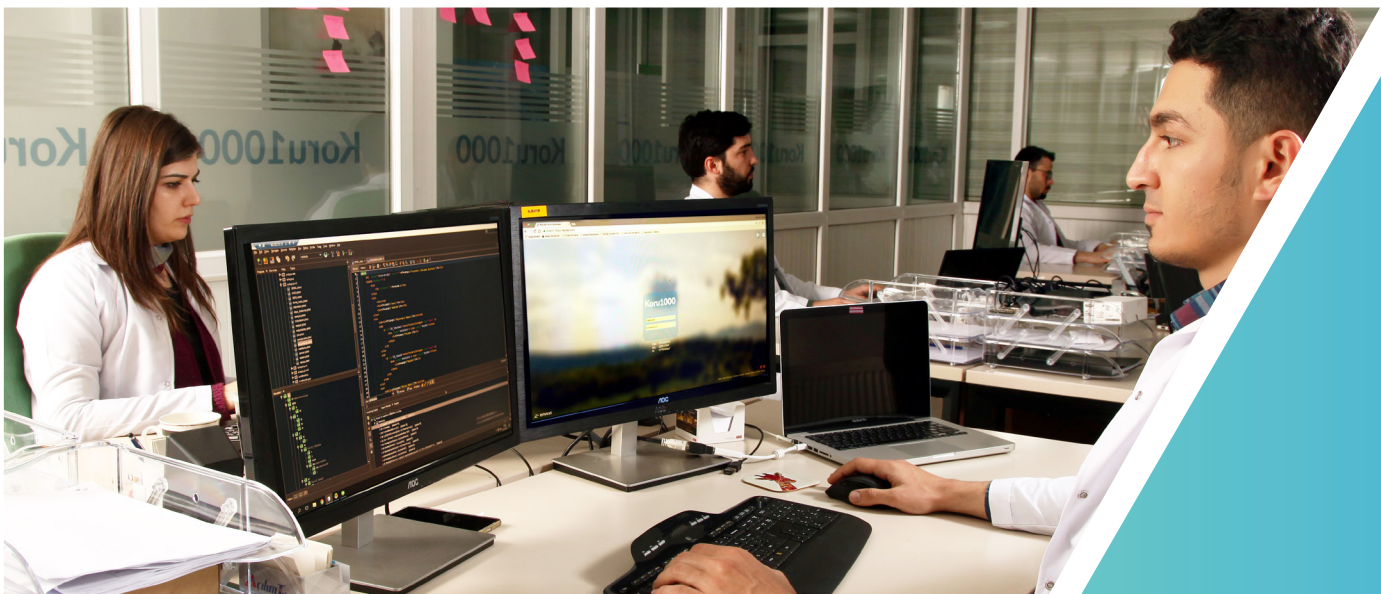


Koru 1000

Manage the System and Breakdowns

Koru1000 devices ensure to manage the system easily and efficiently.

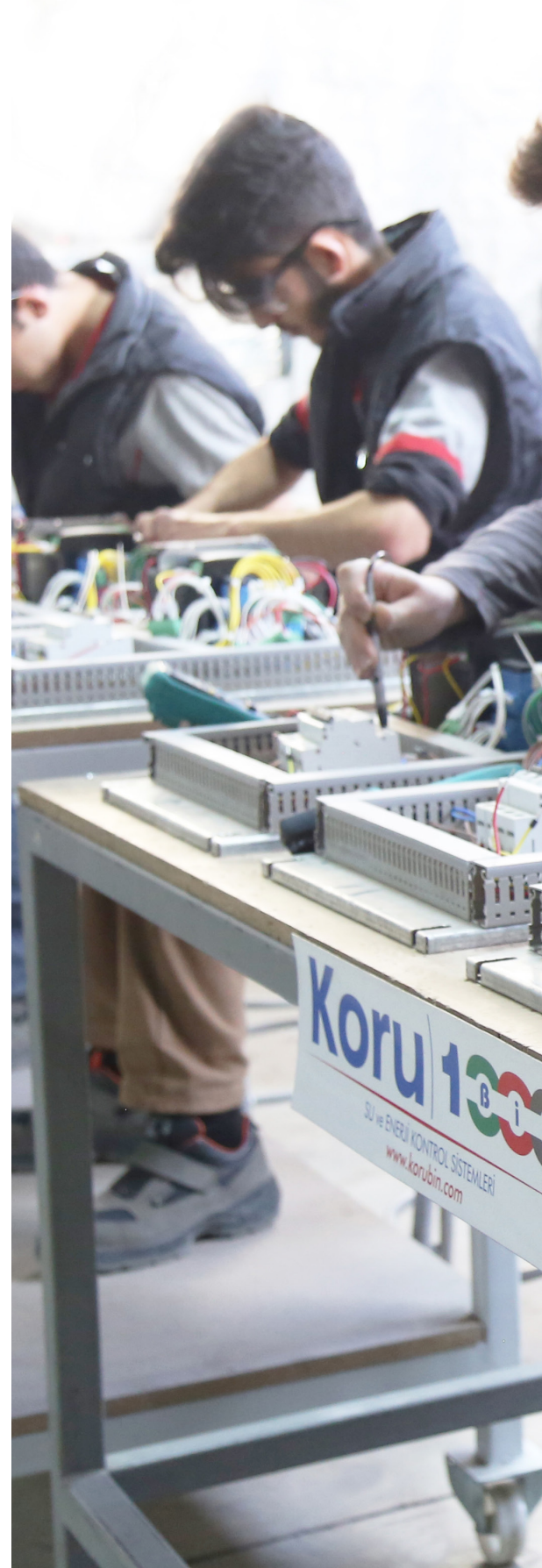
It does not only manage the system but ease to take precaution on the in case of breakdowns. And therefore, it also provides the possibility to open service requests by generating warnings and alarms for the users.

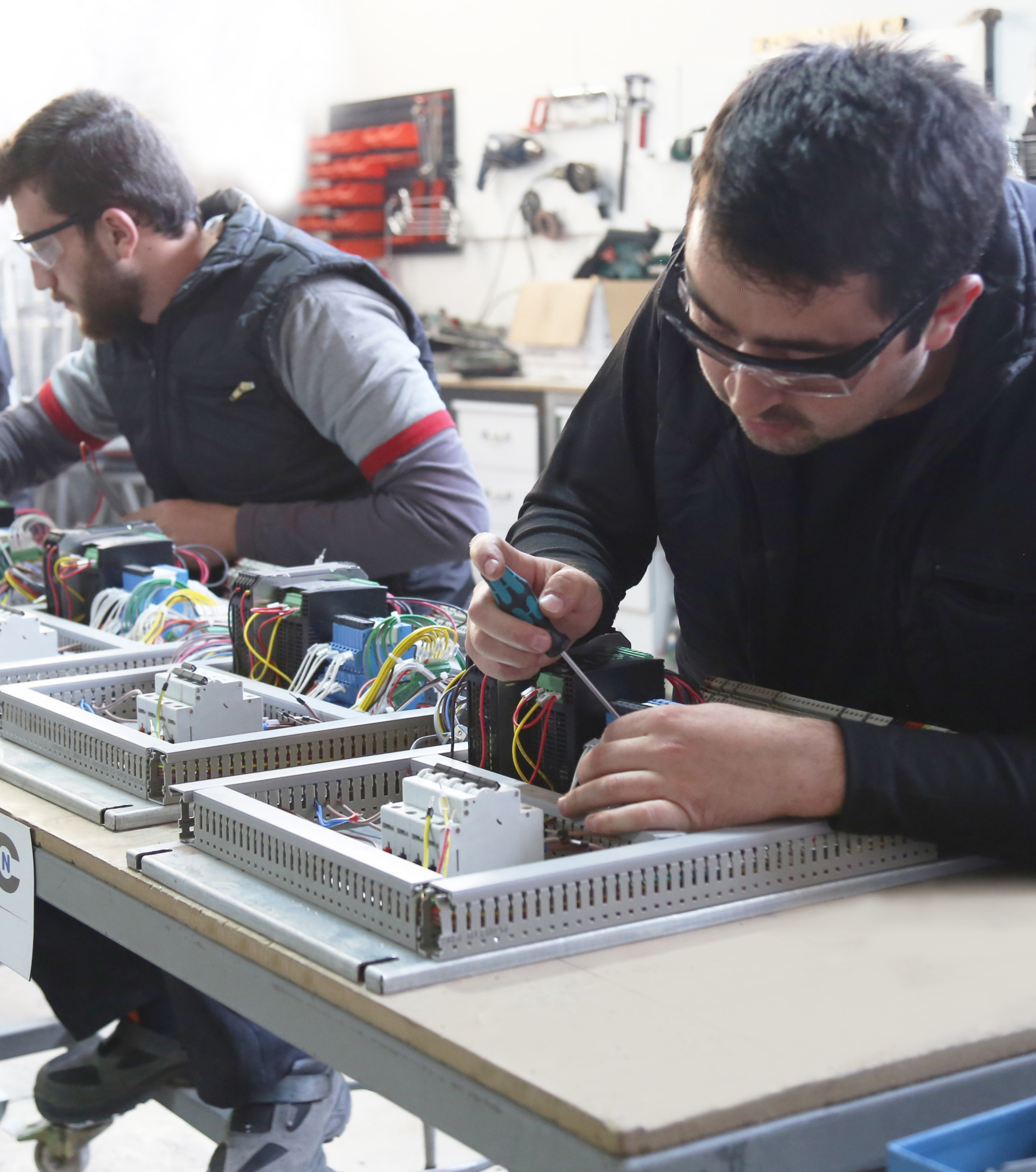




Koru1000 Field Devices

Koru1000 control devices can widen modularly. It has analog/digital & input/output modules for different sensors, actuators and drivers. Koru1000 devices use high speed industrial GSM router to maintain central server communication.









What measured in the field?

Koru1000, measures the ambient temperature, motor temperature, water flow rate, hydrostatic pressure, water pressure, underground water level, consumed energy and produced water in order to analyze for increasing savings and efficiency. By means of dynamic driver speed control; the system runs at its best efficiency in variable circumstances.

“You can not manage if you can not measure”



How Korus1000 Water
Management System
Works?



- Understandable and easy to use interface design
- Authorized stations like borehole wells, water supply stations (riser pumps) and water storage houses can be monitored and managed.
- The parameters to provide efficient operation are determined automatically by the system.
- The instant data gathered from the field are recorded on the cloud system.



Koru 1000

How to use Koru1000?

Koru1000 can be used at all electronic devices like **computers**, **tablets**, and **smart phones**.

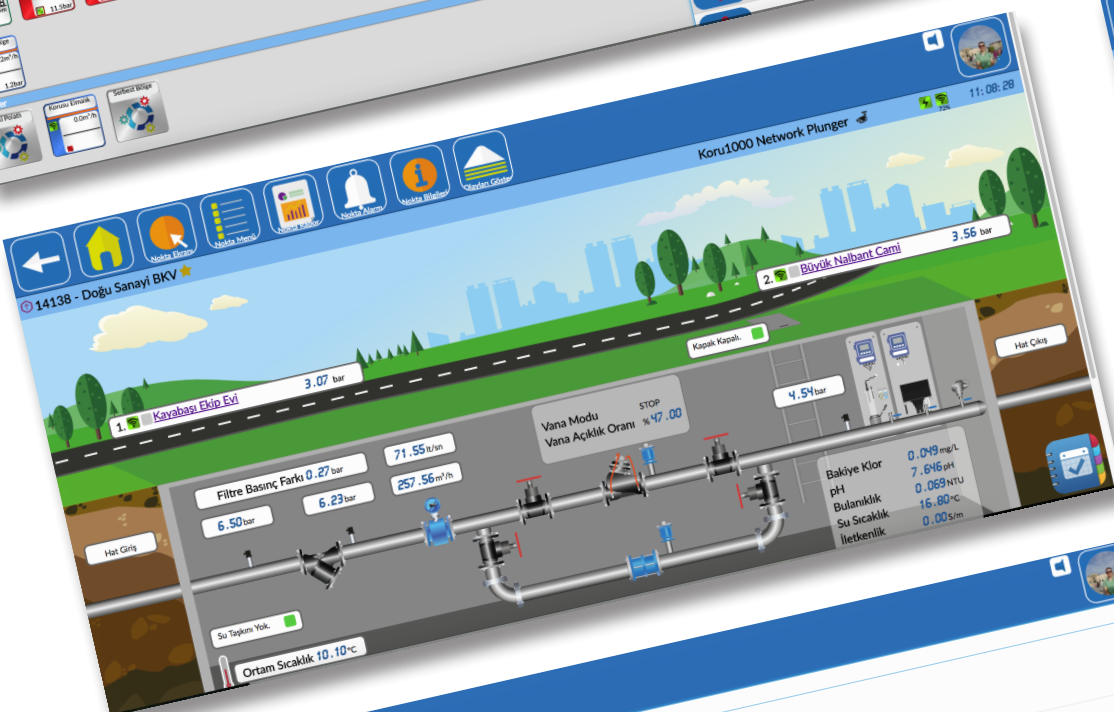
It has accessibility to the required station by means of logging in at different devices at the same time.

The system can be operated **manually** or **automatically** due to the users' parameters.





Koru1000 User Screens





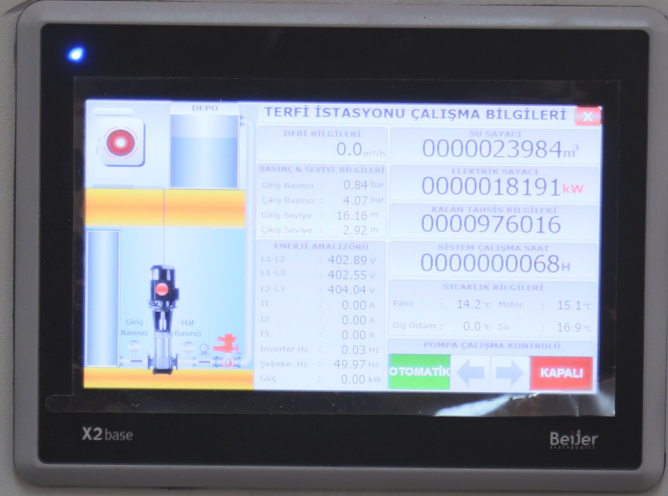


>>>[2017-12-27 11:16:33] A. Arslan Anıtkol Parkı Sondaj 1 : Pompa Start Stop=0
>>>[2017-12-27 11:12:57] A. Kise Çınarlı Sondaj : Pompa1 Ono Mod=1
>>>[2017-12-27 11:06:47] A. Kise Bıyıklı Sondaj : ACT 5 KAPAT=5
>>>[2017-12-27 11:05:29] A. Arslan Anıtkol Parkı Sondaj 1 : Pompa Start Stop=1
>>>[2017-12-27 11:04:17] A. Kise Hırsak Çamlık Depo : ACT 1 AC=0

>>>[2017-12-27 11:20:55] Kızılköy : Kritik Seviye Normal.
>>>[2017-12-27 11:20:55] Sarıhacıoğlu-Güneşli Tırtılı : Motor Durdu Alarm. Sustur.
>>>[2017-12-27 11:19:55] İnönü Tırtılı : Kritik Seviye Alarm. Sustur.
>>>[2017-12-27 11:19:55] İnönü Tırtılı : Kritik Seviye Alarm. Sustur.
>>>[2017-12-27 11:18:55] Kızılköy : Kritik Seviye Alarm. Sustur.

A laptop displaying a data table with multiple columns and rows. The table contains numerical data, likely representing sensor readings or system status over time.

Koru 1000



Koru1000 **24/7** System Support

We serve our customers 24/7 perception.

- Detailed report and technical support on probable pump breakdowns.
- Consultancy service for water systems to work efficiently, continuous, without failures, to prevent water house flooding or emptiness
- On-site Support: technical team's coordination and guidance when required.
- Monitoring and managing systems due to the customers' demand and authorize
- Call our 24 hour hot line: 444 51 29

Koru1000 Data Center

- Redundant Internet Infrastructure (Metro Internet, Satellite, 4.5G)
- Redundant power supply (UPS) and electric generator infrastructure
- Redundant Firewall and Switches
- Redundant Web, OPC and Database Servers
- High Security Measures
- Disaster Recovery Server







Koru 1000

Koru1000 vs. **SCADA**

The distinctive feature differs from traditional SCADA is that Koru1000 is specialized only for water applications and it has over 40 years' filed background of our group companies (drilling, hydrogeology, project planning, proper pump, motor group and mechanic instrument selection).









Manage Your Future with Koru1000

Koru1000 manages the future of water reasonably in the era full of with **Industry 4.0**, internet of things (IoT), big data and artificial intelligence.





How to Buy Koru1000?

Our project engineers do a feasibility study at the field planned to be used. The proper solutions offered to you according to the report consisting initial investment cost, operating cost, life-cycle time. Technical team installs the equipment at the field.

When the system put into use; the support team provides practical trainings to the operators for free.





No Other World!

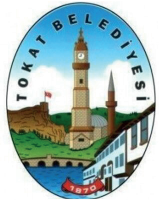
We, as Envest, create our products with an innovative perspective for a sustainable life.

We aim to protect nature by supporting water and energy saving. We feel the pride of encouraging the world that we have only one world and we have to appreciate that the world serves for us.

Take a step to new world by supporting water and energy savings by Koru1000.

REFERENCES

Abdullah Gül University
Acıgöl Municipality
Afşin Thermal Power Plant
Akdağmadeni Municipality
Anadolu Etap
Antalya Water and Waste Water
Affairs
Ankara Water and Sewage Affairs
Belekcihan Municipality
Boğazlıyan Sugar Refinery
Bursa Water and Sewage Affairs
Çekerek Municipality
Dokuboy Textile
12. Regional Directory of State
Hydraulic Works
Erciyes University
HER Energy
HES Kablo
İncesu Agricultural Irrigation
Cooperative
Karapınar Municipality
Kayseri Metropolitan
Municipality
Kayseri Water and Sewage
Affairs
Kayseri Sugar Factory
Kayseri Free Zone
Kayseri Sport Facility
KNAUF
Kocasinan Municipality
Konya Water and Sewerage
Administration (KOSKİ)
Koza Gold
Lüks Kadife
MEGAŞ Gas
Melikgazi Municipality
Merzifon Municipality
Mersin Water and Sewerage
Administration (Meski)
Mimarsinan Organized Industrial
Zone
Niksar Municipality
Orta Anadolu Textile
SANKO ÇİMKO
Sarıkaya Municipality
Şarkışla Municipality
Tokat Municipality
Yozgat Municipality



LÜKS Kadife

Koru 1000

New Generation Water Management Systems



📍 Güllük Mah. Nazımbey Bulvarı,
24/A, 38050 Melikgazi, KAYSERİ / TURKEY
☎ +90 352 224 01 82
✉ info@koru1000.com